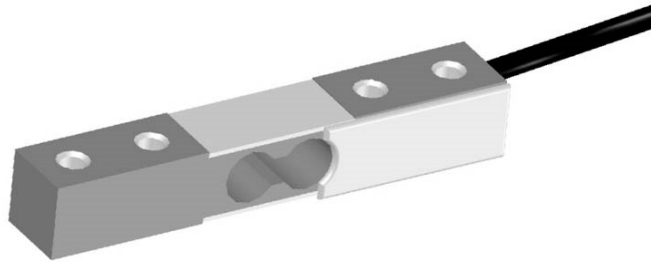


PA17L

Single Point Aluminum Load Cell

TRUE-TEC

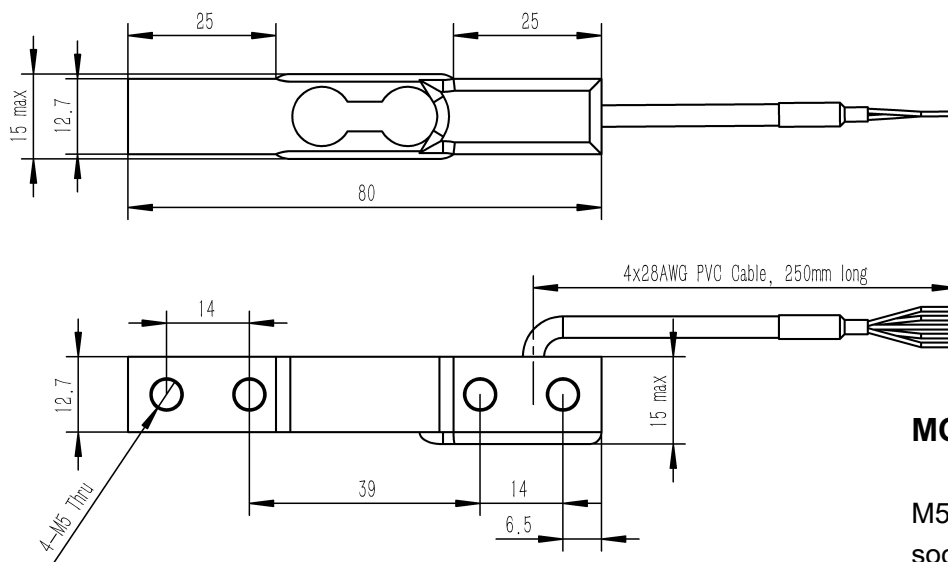
Quality by Advanced Technology



FEATURES

- Capacity 0.5-20kg
- Aluminum Construction
- Single point 150x150 mm platform
- OIML C3 compatible available as P grade
- IP66 protection

OUTLINE DIMENSIONS



MOUNTING

M5 8.8 screws with socket head, tightening torque 4.5NM

SPECIFICATION

| PARAMETER | UNIT | VALUE | |
|------------------------------|---------------|--|-------|
| True-Tec Grade | | M | P |
| Rated capacity (E_{max}) | kg | 0.5, 1, 3, 5, 10, 15, 20 | |
| Sensitivity | mV/V | 2.00 | |
| Sensitivity tolerance | \pm mV/V | 0.20 | |
| Zero balance | \pm mV/V | 0.10 | |
| Creep over 30min. | \pm % | 0.05 | 0.017 |
| Temperature effect on zero | \pm %/10 °C | 0.05 | 0.040 |
| Temperature effect on output | \pm %/10 °C | 0.05 | 0.012 |
| Linearity deviation | % | 0.05 | 0.02 |
| Hysteresis | % | 0.05 | 0.02 |
| Repeatability | % | 0.05 | 0.02 |
| Maximum platform size | cm | 15x15 | |
| Nominal temperature range | °C | -10 to +40 | |
| Service temperature range | °C | -30 to +70 | |
| Limit load | % of R.C. | 150 | |
| Break load | % of R.C. | 300 | |
| Nominal excitation | V | 10 | |
| Max. excitation | V | 15 | |
| Input impedance | Ohm | 415 \pm 15 | |
| Output impedance | Ohm | 350 \pm 3 | |
| Insulation resistance | MOhm | >2000 | |
| Compensation circuit type | | Balanced Bridge | |
| Cable length | Meter | 0.25 | |
| Cable type | | 4x28 AWG, Black PVC Jacket | |
| Color code | | +exc -green, +sig-red, -exc-black, -sig- white | |
| Construction | | Aluminum | |
| Protection class to IEC529 | | IP 66 | |

Note: 1000Ohm load cell available to order.

APPLICATIONS

Model PA17L is a low profile single point load cell designed for low cost platforms. Typical applications include kitchen and pocket scales.

A special humidity resistant protective coating assures long-term stability over the entire compensated temperature range.

The PA17L provides scale manufacturers with a low cost sensor to meet today's needs.

Due to True-Tec's Policy of continuous development, these

specifications are subject to change without notice.

All details describe our products in general form only. They are not to be understood as express warranty and do not constitute any liability whatsoever.

Beijing True-Tec Co., Ltd.

4/F, Bldg. 2, No. 8, Hong Da Bei Lu

BDA, Beijing 100176, China

Tel.: +86-10-67869219 Fax: +86-10-67862581

E-mail: info@true-tec.com

www.true-tec.com