

CS20

High Capacity Compression Load Cell

TRUE-TEC

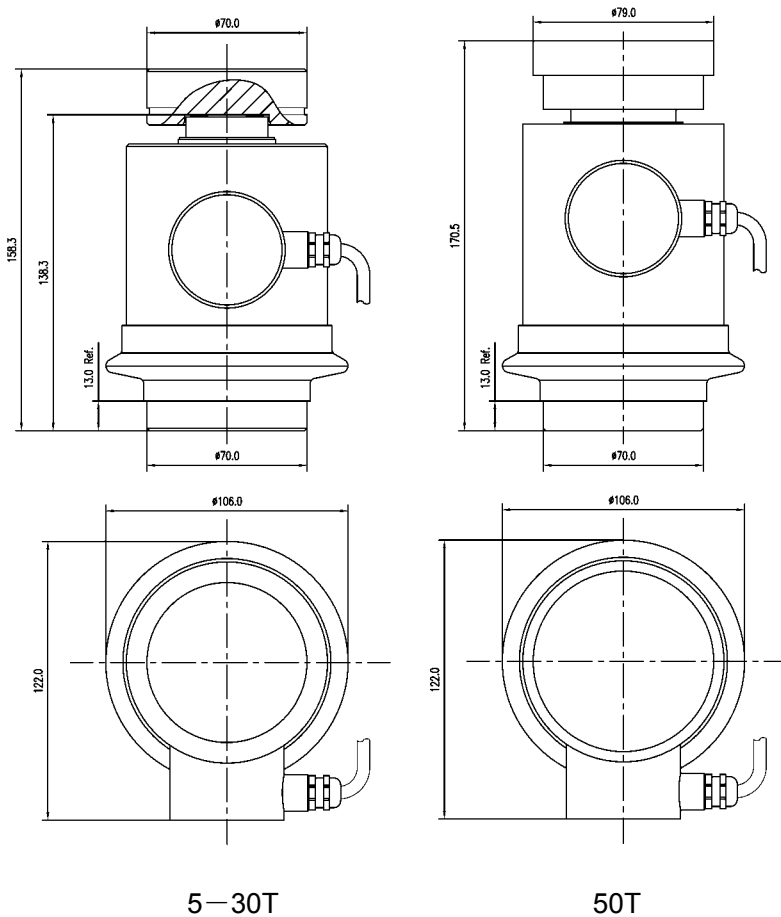
Quality by Advanced Technology



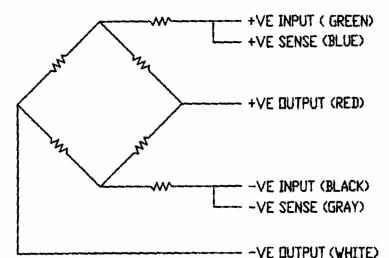
FEATURES

- Capacity 5-50 Tons
- Stainless steel housing with nickel plated alloy steel sensor
- Surge arrestor fitted
- Hermetically Sealed to IP68 protection
- Interchangeable with PR6201, 120.

OUTLINE DIMENSIONS



WIRING DIAGRAM



SPECIFICATION

PARAMETER	UNIT	VALUE	
Rated capacity (E _{max})	Ton	5, 10, 20, 30, 50	
True-Tec Grade		N	P
Sensitivity	mV/V	1.500	
Sensitivity tolerance	± mV/V	0.030	
Zero balance	± mV/V	0.030	
Temperature effect on zero	± %/10 °C	0.060	0.040
Temperature effect on output	± %/ 10°C	0.050	0.040
Total Error	%	0.030	0.020
Zero Return after 30 min.	%	0.030	0.020
Nominal temperature range	°C	-10 to +40	
Service temperature range	°C	-30 to +70	
Limit load	% of R.C.	200	
Break load	% of R.C.	300	
Nominal excitation	V	10	
Max. excitation	V	24	
Input impedance	Ohm	670 ± 10	
Output impedance	Ohm	605 ± 5	
Insulation resistance	MOhm	>2000	
Cable length	Meter	15M (10-30T), 20M (50T)	
Cable type		6 conductors, 26 AWG, Braid Shielded, Gray PU Jacket	
Color code		+Exc -Grn, +Sig -Red, +Sen -Blu, -Exc -Blk, -Sig -Wht, -Sen -Gry	
Construction		Alloy Steel sensor, Stainless Steel housing	
Protection class to IEC529		IP 68	

Note: 100 Ton capacity available to order

APPLICATIONS

Model CS20 is a modern single column compression load cell of low profile. Suitable for all heavy duty weighing applications, the CS20 gives high accuracy and low installation cost.

With anti-corrosion plated alloy steel sensor and contained in a stainless steel housing, it is particularly well suited for truck scales, rail road scales, tank, bin and silo weighing application etc.

This compression load cell has a small tolerance in output and can be easily used in multi-cell installations without any adjustment in junction box.

The additional sensor wires feed back the voltage reaching the load cell, compensate for changes in lead resistance due to temperature change and/or cable extension is achieved by feeding this voltage into the appropriate electronics.

Due to True-Tec's Policy of continuous development, these specifications are subject to change without notice.

All details describe our products in general form only. They are not to be understood as express warranty and do not constitute any liability whatsoever.

Beijing True-Tec Co., Ltd.

Rm. B303, No. 10A, Long Qing Street,
BDA, Beijing 100176, China

Tel.: +86-10-67869219 Fax: +86-10-67862581

E-mail: info@true-tec.com www.true-tec.com