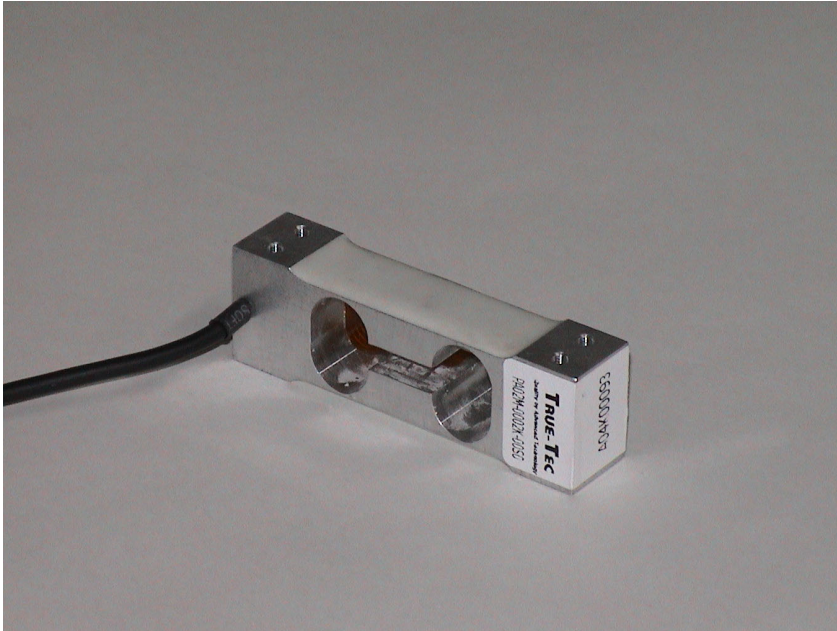


PA02

Single Point Aluminum Load Cell

TRUE-TEC

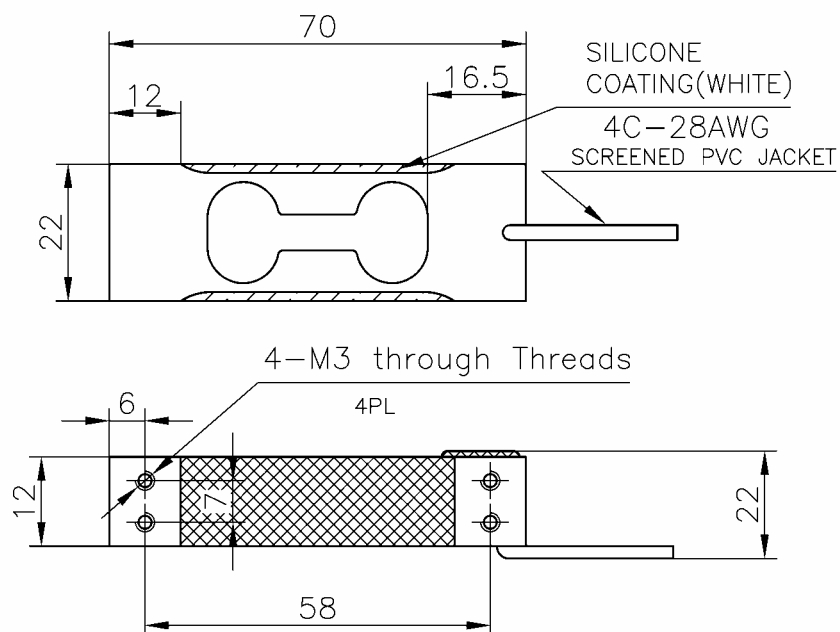
Quality by Advanced Technology



FEATURES

- Capacity 2-5kg
- Up to 30,000 divisions short term precision at room temperature
- Single point 200x200 mm platform
- IP66 protection
- Interchangeable with C2X1, PW4, 1006.

OUTLINE DIMENSIONS



MOUNTING

M3-8.8 screws with socket head, tightening torque 1.4NM

SPECIFICATION

PARAMETER	UNIT	VALUE	
Rated capacity (E _{max})	kg	2, 3, 5	
True-Tec Grade		P	S
Sensitivity	mV/V	2.00	
Sensitivity tolerance	± mV/V	0.20	
Zero balance	± mV/V	0.10	
Creep (From stable to 2min)	± %	0.0100	0.0050
Creep over 30min	± %	0.0170	0.0125
Temperature effect on zero	± %/ °C	0.0040	
Temperature effect on output	± %/ °C	0.0014	
Hysteresis	%	0.020	0.0045
Linearity deviation	%	0.020	0.0100
Repeatability	%	0.020	0.0050
Eccentric loading error	% /cm	0.0057	
Nominal temperature range	°C	0 to +40	
Service temperature range	°C	-30 to +70	
Limit load	% of R.C.	150	
Break load	% of R.C.	300	
Nominal excitation	V	10	
Max. excitation	V	15	
Input impedance	Ohm	415 ± 15	
Output impedance	Ohm	350 ± 3	
Insulation resistance	MOhm	>2000	
Cable length	Meter	0.35	
Cable type		4 conductors, 28 AWG, Braid Shielded, Black PVC Jacket	
Color code		+Exc -Grn, +Sig-Red, -Exc-Blk, -Sig- Wht	
Construction		Aluminum	
Compensation circuit type		Balanced Bridge	
Protection class to IEC529		IP 66	

APPLICATIONS

Model PA02 is a very low capacity, high precision single point load cell designed for direct mounting in low capacity scales and precision balances.

The PA02 offers up to 30,000 divisions' short term precision at room temperature. This load cell is suitable for applications including postal scales, counting scales, precision balances, and is also suitable for a wide variety of force measurement applications, such as industry process control where the acting center of force application is within 100mm from the load cell vertical axis.

Due to True-Tec's Policy of continuous development, these specifications are subject to change without notice.

All details describe our products in general form only. They are not to be understood as express warranty and do not constitute any liability whatsoever.

Beijing True-Tec Co., Ltd.

Rm. B#303, No. 10A, Long Qing Street,
BDA, Beijing 100176, China

Tel.: +86-10-67869219 Fax: +86-10-67862581

E-mail: info@true-tec.com www.true-tec.com