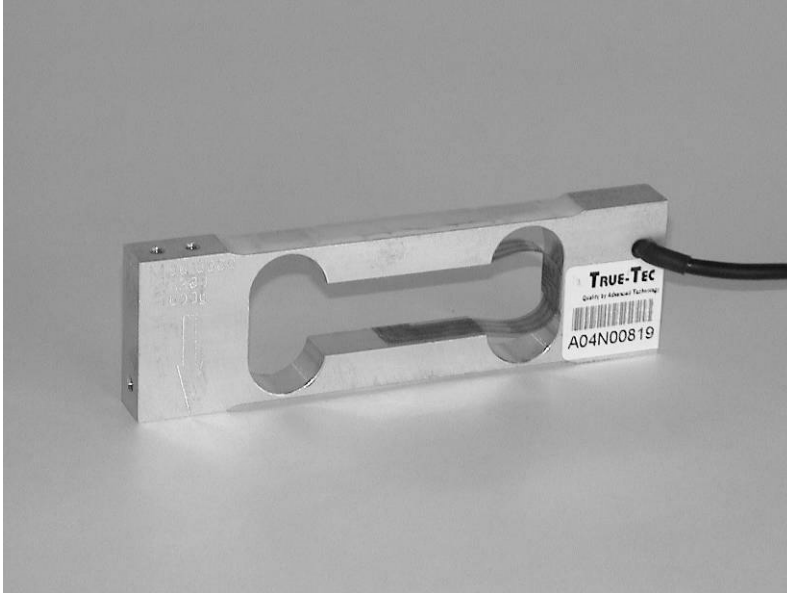


PA04

Single Point Aluminum Load Cell

TRUE-TEC

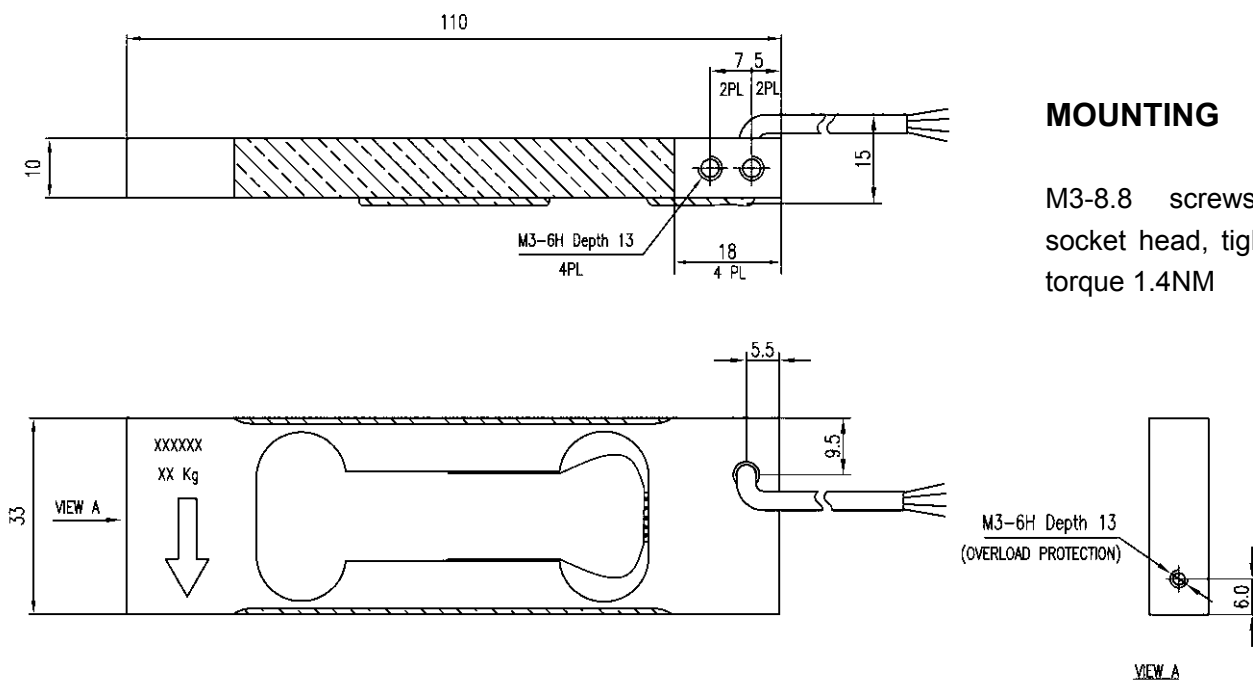
Quality by Advanced Technology



FEATURES

- Capacity 150-3000g
- Up to 100,000 divisions short term precision at room temperature
- Single point 200x200 mm platform
- IP66 protection
- Total error better than 0.0048% of Rated Output

OUTLINE DIMENSIONS



MOUNTING

M3-8.8 screws with socket head, tightening torque 1.4NM

SPECIFICATION

PARAMETER	UNIT	VALUE			
Rated capacity (E _{max})	g	150*, 300, 600, 1200, 1500, 3000			
True-Tec Grade		R	S	U	V
Sensitivity	mV/V	0.90			
Sensitivity tolerance	± mV/V	0.10			
Zero balance	± mV/V	0.10			
Creep (From stable to 2min)	± %	0.0085	0.0050	0.0033	0.0028
Creep over 30min	± %	0.0150	0.0125	0.0100	0.0083
Temperature effect on zero	± %/ °C	0.0040			
Temperature effect on output	± %/ °C	0.0014			
Hysteresis	%	0.0080	0.0045	0.0036	0.0033
Linearity deviation	%	0.0120	0.0100	0.0060	0.0048
Repeatability	%	0.0090	0.0050	0.0040	0.0030
Eccentric loading error	% /cm	0.0042	0.0042	0.0036	0.0024
Nominal temperature range	°C	0 to +40			
Service temperature range	°C	-30 to +70			
Limit load	% of R.C.	200			
Break load	% of R.C.	300			
Nominal excitation	V	5			
Max. excitation	V	15			
Input impedance	Ohm	410 ± 15			
Output impedance	Ohm	350 ± 3			
Insulation resistance	MOhm	>2000			
Cable length	Meter	0.35			
Cable type		4 conductors, 28 AWG, Aluminum foil Shielded, Black PVC Jacket			
Color code		+Exc -Grn, +Sig-Red, -Exc-Blk, -Sig- Wht			
Construction		Aluminum			
Compensation circuit type		Balanced Bridge			
Protection class to IEC529		IP 66			

Note: 150g load cell available up to U grade

APPLICATIONS

Model PA04 is a very low capacity, very high precision single point load cell designed for direct mounting in low capacity scales and precision balances.

The PA04 offers up to 100,000 divisions' short term precision at room temperature. This load cell is ideal for applications including jewelry scales, analytical balances, medical equipment, medical and pharmaceutical research and low level force measurement.

A threaded hole in the loading end of the load cell is provided for overload protection.

Due to True-Tec's Policy of continuous development, these specifications are subject to change without notice.
All details describe our products in general form only. They are not to be understood as express warranty and do not constitute any liability whatsoever.

Beijing True-Tec Co., Ltd.

4/F, Bldg. 2, No. 8, Hong Da Bei Lu
BDA, Beijing 100176, China
Tel.: +86-10-67869219 Fax: +86-10-67862581
E-mail: info@true-tec.com www.true-tec.com